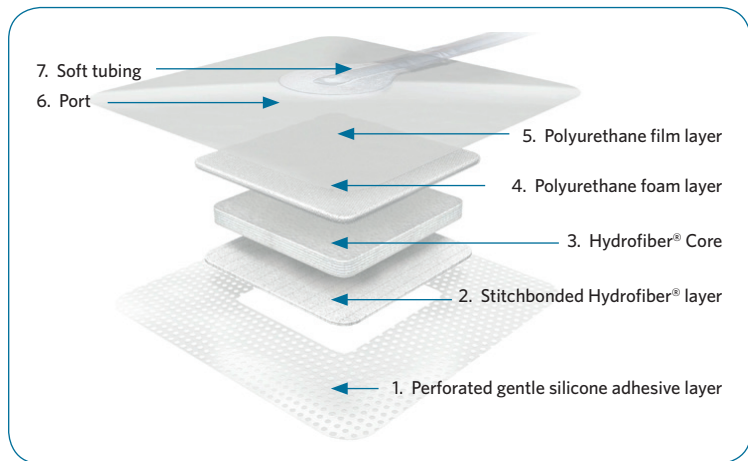


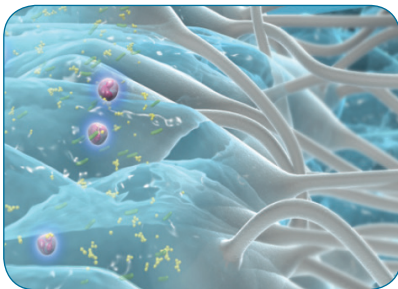
Using THE AVELLE™ NPWT SYSTEM in practice

The Avelle™ Dressings are designed with Hydrofiber® technology to provide an effective wound contact layer.



Hydrofiber® technology gels on contact with wound fluid to create a moist wound environment that benefits healing*1.

Moisture from the wound moves through channels in the dressing, and the Hydrofiber® core ensures exudate and bacteria are locked away*2-4.



The Avelle™ NPWT System provides enhanced wound healing delivered in a disposable, battery-powered, canister-less system for the treatment of wounds with low to moderate levels of exudate.

- ✓ Easy-to-use
- ✓ Small and portable
- ✓ 30-day pump lifespan
- ✓ Suitable for acute and community care settings
- ✓ The only NPWT system to incorporate Hydrofiber® technology



Provides flexibility for you and your patients

- ✓ **Pumps and dressing packs are purchased separately**, allowing a flexible approach to stock management, that could also lead to reduced wastage of pumps and dressings
- ✓ **The Avelle™ Dressing retains negative pressure for up to 60 minutes after disconnection from the pump** allowing for continuity of therapy during activities such as showering*5

References

<p>1. ConvaTec. ASSESSMENT OF THE IN-VITRO PROPERTIES AVELLE™ NEGATIVE PRESSURE WOUND THERAPY DRESSING. 2015; WHR14520 MS128. Data on file.</p>	<p>2. Waring MJ, Parsons D. <i>Biomaterials</i> 2001; 22: 903-12</p> <p>3. Walker M et al. <i>Biomaterials</i> 2003; 24(5): 883-90</p> <p>4. ConvaTec Inc. HFM-2015/017. Data on file. 2015.</p> <p>5. Airway Negative Pressure Luer Fitting Test. Doc number DOC-RN-115-ref-1. Data on file. 2015.</p>
---	---

*As demonstrated *in vitro*

1. Carry out suitability assessment

Selecting patients who are suitable for The Avelle™ NPWT System

1. Ensure the patient (and/or carer)

- Is aware of their treatment goals and agrees with their wound management plan
- Will be concordant with their therapy and is capable of operating the system
- Can identify when to contact a health care professional
- Has an appropriate care setting/home environment to support their therapy

YES

NO - consider alternative treatment

2. Ensure the wound

- Has **low to moderate** levels of exudate
- Is **no greater than 2cm** in depth
- Can **fit comfortably within the pad area**, allowing for the port to be positioned over intact skin
- Is within The Avelle™ NPWT indications:
 - Surgically closed incision
 - Flap or graft (pre and post-operative)
 - Acute wound
 - Chronic wound (e.g. pressure, venous or diabetic foot ulcer)
 - Traumatic wound
 - Subacute and dehisced wound

YES

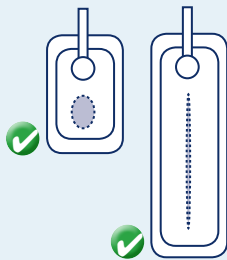
NO - consider alternative treatment

3. Other considerations

- Wounds greater than 0.5cm and up to 2cm in depth may need to be used in conjunction with AQUACEL Extra™ or AQUACEL® dressings, or, if not available, standard gauze
- The Avelle™ NPWT System can be used in conjunction with compression therapy if required

Continue to application of The Avelle™ NPWT System

2. Select dressing



Ensure that:

- ✓ The port can be positioned over intact skin and away from the wound
- ✓ The surface area of the wound does not comprise more than 25% of the pad area
- ✓ There is a 1cm overlap of the pad on to peri-wound skin

3. Apply and activate



Apply

Apply the dressing positioning port over intact skin and away from the wound. Avoid creasing, reposition if required.



Seal

Apply fixation strips to all sides of the dressing with a 1cm overlap to ensure a good seal.



Connect

Securely connect the pump tubing and dressing tubing connectors.



Start

Press the blue button to commence delivery of NPWT.

4. Follow these best-practice tips

Do

Dressing seal

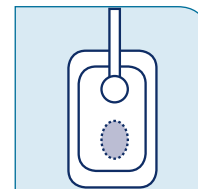
- Always use the provided fixation strips to ensure an adequate seal around the dressing

Don't

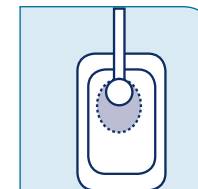
- **Don't** cut dressings, as this will compromise the seal
- **Don't** position the port over the wound
- **Don't** stretch the dressing when applying
- **Don't** apply any other adhesive or film dressing over The Avelle™ Dressing, as this will affect fluid handling capability

Dressing change

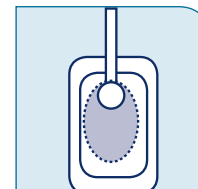
- A typical wear time is 3-4 days up to a maximum wear time of 7 days
- Remember to change the dressing before wound fluid pools around the port
- The dressing should be changed if there are signs of leakage, pooling close to or around the port, or loss of adhesion



Dressing is properly positioned



Dressing needs to be changed



Dressing needs to be changed