

# PRACTICAL APPLICATION OF AQUACEL FOAM DRESSING

# THE HYDROFIBER TECHNOLOGY DIFFERENCE

# QUICK GUIDE

## AQUACEL®

## FOAM DRESSING



✓ Can be cut to shape†



✓ Adhesive does not stick to gloves or itself



✓ Easy to apply and remove<sup>18</sup>



✓ Waterproof and showerproof<sup>12</sup>



✓ Viral and bacterial barrier<sup>12</sup>



✓ Effective under compression<sup>9</sup>



✓ Soft, gentle, flexible, conformable†



✓ 7-day wear time†



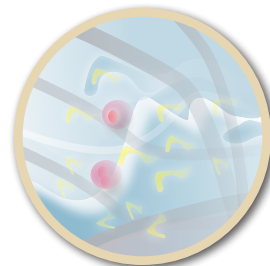
✓ Versatile dressing range

†Please refer to AQUACEL Foam dressing package insert for complete Instructions for Use.

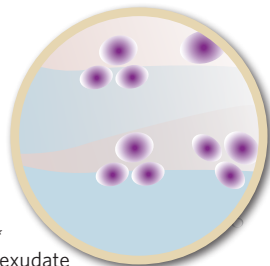
**AQUACEL Foam dressing is powered by Hydrofiber Technology**



Micro-contours to wound bed\* to minimise 'dead space'<sup>14</sup> and maintain moisture balance<sup>15</sup>



Locks in exudate and traps bacteria\* to protect the periwound skin<sup>10,11</sup> and minimise cross-infection during removal<sup>12,13</sup>



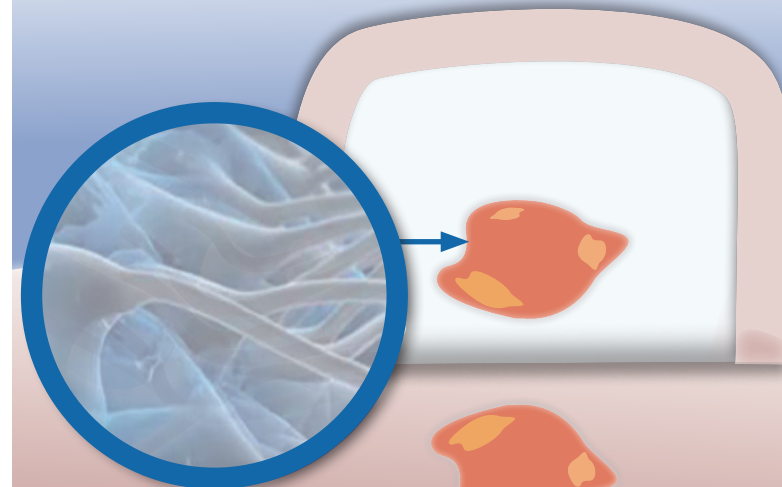
Forms a cohesive gel\* when in contact with exudate

\*As demonstrated in vitro



Supported by: ConvaTec | [www.ConvaTec.co.uk](http://www.ConvaTec.co.uk)

®™ indicates a trademark of ConvaTec Inc. ConvaTec Ltd is an authorised user.



## IN PRACTICE

Wounds UK

### References

- Ousey K, Cook L (2012) Wound Assessment Made Easy. *Wounds UK* Available at: [www.wounds-uk.co.uk](http://www.wounds-uk.co.uk) (accessed on 10.03.16)
- AQUACEL® Foam Dressing – Waterproofness, Bacterial and Viral Barrier Testing. WHRI3538 MS069 Data on File, ConvaTec Inc
- Waring MJ, Parsons D (2001) Physicochemical characterisation of carboxymethylated spun cellulose fibres. *Biomaterials* 22(9): 903-12
- Armstrong SH, Brown DA, Hill E, Ruckley CV (1995) A randomized trial of a new Hydrofiber dressing, AQUACEL, and an alginate in the treatment of exuding leg ulcers. Poster presented at: 5th European Conference on Advances in Wound Management, Harrogate, UK
- Barnea Y, Amir A, Leshem D, et al (2004) Clinical comparative study of Aquacel and paraffin gauze dressing for split skin donor site treatment. *Ann Plast Surg* 53(2):132-136

- Caruso DM, Foster KN, Blome-Eberwein SA, et al (2006) Randomized clinical study of Hydrofiber dressing with silver or silver sulfadiazine in the management of partial thickness burns. *J Burn Care Res* 27(3):298-309
- Kogan L, Moldavsky M, Szvalb S, Govrin-Yehudain J. (2004) Comparative study of Aquacel and Silvercel treatment in burns. *Ann Burns Fire Disasters* 17(4): 201-7
- Healthy Volunteer Study Report, Protocol CV 0207 11 A736. Data on File, ConvaTec Inc
- WHRI3770 TA286 A Comparison of the In vitro Bio-Physical Performance Characteristics of Silicone Foam Dressings used in Wound Management. Data on file, ConvaTec
- Coutts P, Sibbald RG (2005) The effect of a silver-containing Hydrofiber dressing on superficial wound bed and bacterial balance of chronic wounds. *Int Wound J* 2(4):348-356
- Robinson BJ (2000) The use of a hydrofiber dressing in wound management. *J Wound Care* 9(1):32-4

- Walker M, Hobot JA, Newman GR, Bowler PG (2003) Scanning electron microscopic examination of bacterial immobilisation in a carboxymethyl cellulose (AQUACEL®) and alginate dressings. *Biomaterials* 24: 883-890
- Bowler PG, Jones SA, Walker M, Parsons D (2004) Microbicidal properties of a silver-containing Hydrofiber® dressing against a variety of burn wound pathogens. *J Burn Care Rehabil* 25: 192-6
- Bowler PG (2003) Progression towards healing: wound infection and the role of an advanced silver-containing Hydrofiber® dressing. *Ostomy Wound Manage* 49(8): (suppl):S2-S5
- Walker M, Bowler PG, Cochrane CA (2007) In vitro studies to show sequestration of matrix metalloproteinases by silver-containing wound care products. *Ostomy Wound Manage* 53(9):18-25

# OPTIMAL WOUND MANAGEMENT USING AQUACEL FOAM DRESSING

## ASSESS

Provide an holistic assessment

Patient	Medical status and history, psychological wellbeing, nutritional status and lifestyle, care environment, pain levels
<p>No pain                      Distressing pain                      Unbearable pain</p>	
Wound	Wound history, type, size, exudate levels, malodour, periwound and surrounding skin condition, previous dressing choice <sup>1</sup>

**AQUACEL Foam dressing can be used for†:**

- All exuding wounds
- Acute and chronic wounds
- Shallow wounds (as a primary dressing)
- Deep wounds (as a secondary dressing)
- Leg ulcers, diabetic foot ulcers, pressure ulcers, traumatic injuries, post-surgical wounds

†Please refer to AQUACEL Foam dressing package insert for complete Instructions for Use.

## MANAGE

Implement a wound dressing regimen

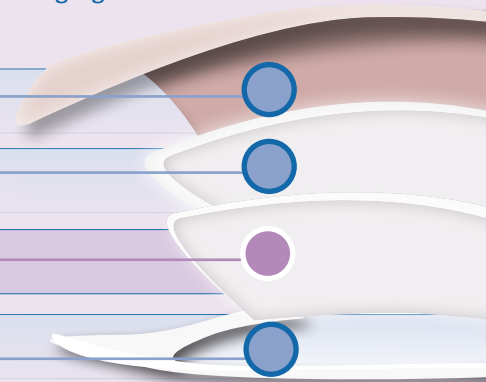
**AQUACEL Foam dressing**

**Protective top layer**

**Soft absorbent foam pad**

**AQUACEL contact layer**

**Gentle silicone adhesive**



<b>Protective top layer</b>	Waterproof, viral and bacterial barrier <sup>2</sup>
<b>Soft absorbent foam pad</b>	Absorbs excess fluid
<b>AQUACEL contact layer, powered by Hydrofiber® Technology</b>	Absorbs wound fluid and creates a soft gel, maintaining a moist wound environment Locks in exudate through vertical wicking, reducing the risk of maceration <sup>3*</sup> Helps minimise pain while <i>in situ</i> and during dressing changes <sup>4-7</sup>

\*As demonstrated *in vitro*

## MONITOR

Reassess and document the wound at each dressing change

- Classification
- Wound bed condition (% viable, % non-viable tissue)
- Location
- Size (length, width, depth)
- Exudate (colour, consistency, level)
- Associated pain or odour
- Associated signs and symptoms of infection
- Peri-wound skin condition (swelling, discolouration, bruising, maceration)

**REASSESS** Repeat cycle at each dressing change